

COLTECH® E-series

Elastomers for gypsum & concrete objects

Coltech products used for gypsum and concrete objects applications



COLTECH® E-series

COLTECH E4020®

Polyurethane Elastomer Resin

COLTECH E4020®

COLTECH E4020® is a two component, solvent free, low modulus, polyurethane elastomer. It provides excellent elasticity and high tear resistance properties with minimum shrinkage.

Cures by reaction (cross linking) of the two components even at very low temperatures.

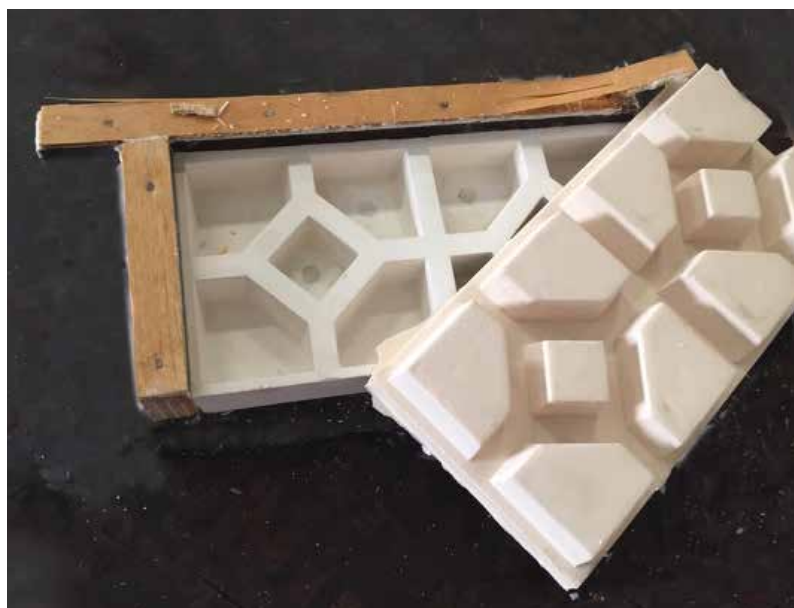
Uses

COLTECH E4020® is a specialized elastomeric resin for:

- production of molds for use in concrete and gypsum objects production
- production of molds for use in resin objects production
- production of soft-elastic objects
- filling / casting applications

Advantages

- Solvent free
- Shore A 20
- Cold curing
- Minimum shrinkage
- High tear strength
- High impact strength
- Chemical resistant
- Over 10 years of positive feedback worldwide



Target Customers

Manufacturing companies of concrete objects

Manufacturing companies of gypsum objects

COLTECH® E-series

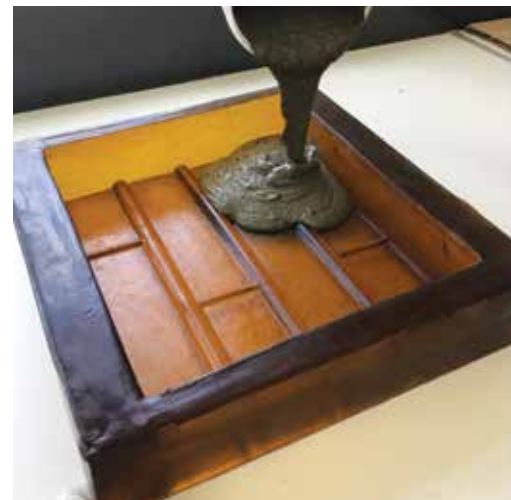
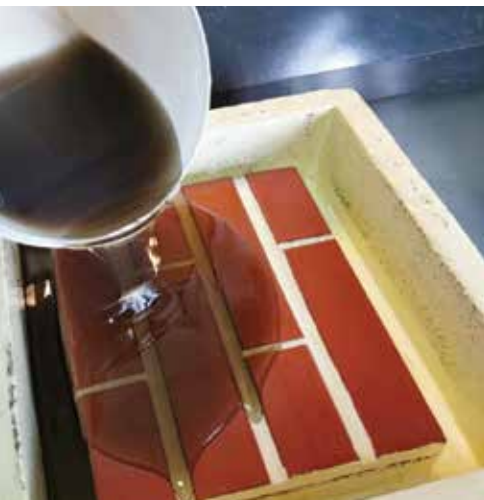
COLTECH E4030®

Polyurethane Elastomer Resin

COLTECH E4030®

COLTECH E4030® is a two component, solvent free, high modulus, polyurethane elastomer. It provides excellent elasticity and high tear resistance properties with minimum shrinkage.

Cures by reaction (cross linking) of the two components even at very low temperatures.



Uses

COLTECH E4030® is a specialized elastomeric resin for:

- production of molds for use in concrete and gypsum objects production
- production of molds for use in resin objects production
- production of elastic objects
- filling / casting applications

Advantages

- Solvent free
- Shore A 30
- Cold curing
- Minimum shrinkage
- High tear strength
- High impact strength
- Chemical resistant
- Over 10 years of positive feedback worldwide

Target Customers

Production companies of Concrete and Gypsum Objects

COLTECH® E-series

COLTECH E4080®

Polyurethane Elastomer Resin

COLTECH E4080®

COLTECH E4080® is a two component, solvent free, high modulus, polyurethane elastomer. It provides excellent elasticity and high tear resistance properties with minimum shrinkage.

Cures by reaction (cross linking) of the two components even at very low temperatures.

Uses

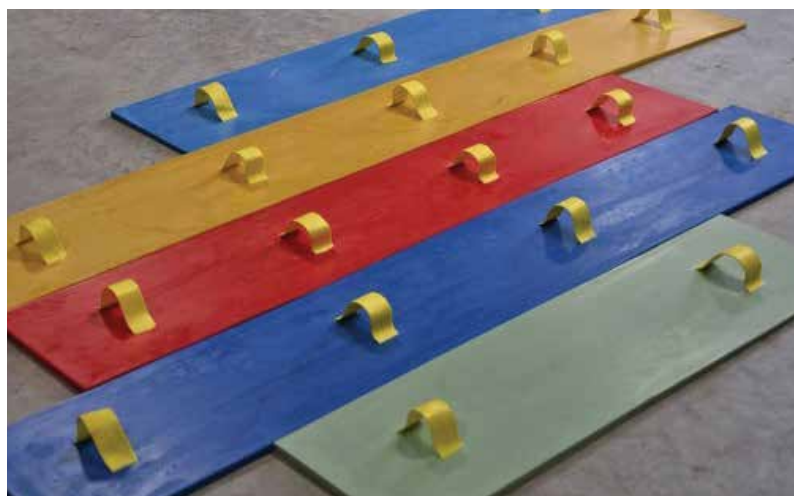
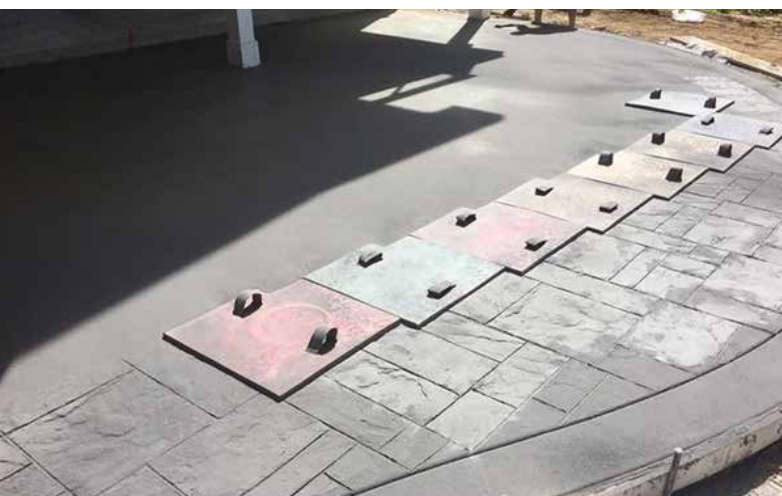
COLTECH E4080® is a specialized elastomeric resin for:

- production of molds for use in cementitious objects production
- production of molds for use in resin objects production
- production of stamps for stamped concrete applications
- production of hard-elastic objects
- filling / casting applications



Advantages

- Solvent free
- Shore A 80
- Cold curing
- Minimum shrinkage
- High tear strength
- High impact strength
- Chemical resistant
- Over 10 years of positive feedback worldwide



Target Customers

Production companies of **stamped concrete stamps**

Production companies of **elastomeric objects**

COLTECH® E-series

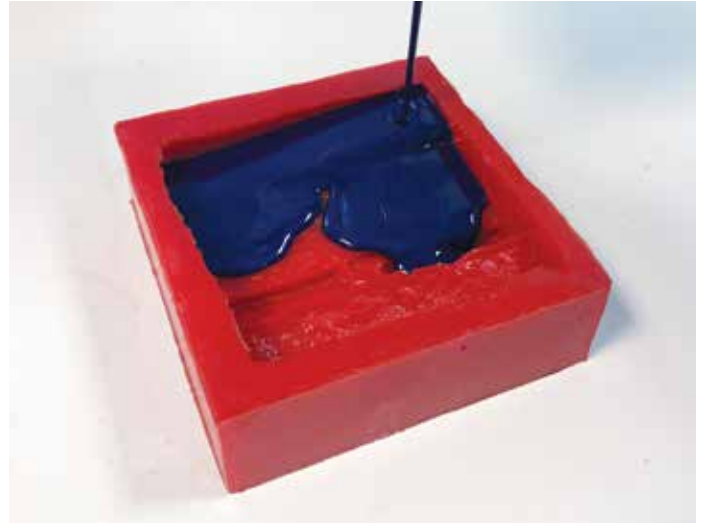
COLTECH E499®

Mould Release Agent

COLTECH E499®

COLTECH E499® is a single component, highly specialized mould release agent for use with Polyurethane Elastomeric resins.

It provides excellent release properties with minimum consumption.



Uses

COLTECH E499® is a highly specialized, oil based, mould release agent for use in combination with Polyurethane Elastomeric resins for casting / prototyping applications.

Advantages

- Excellent release properties
- Low consumption
- Over 10 years of positive feedback worldwide

Target Customers

Production companies of Concrete and Gypsum casted Objects

COLTECH® E-series

COLTECH E497®

Water Based Release Agent

COLTECH E497®

COLTECH E497® is a water based lubricant and release agent to separate gypsum and concrete parts from silicone moulds and PU elastomer moulds. It reduces the friction between the mould and the part thus prolonging the service life of the mould.

COLTECH E497® does not affect painting or bonding of the moulded parts.



Uses

COLTECH E497® is a highly specialized, water based, mould release agent for use in combination Polyurethane and Silicon Elastomeric molds for casting / applications such:

- Gypsum objects
- Cement objects
- Parts subjected to finishing operation after molding, like sanding, polishing, bonding, painting
- Limited productions where minimum cost and application time is required.

Advantages

- Stable solution after dilution in water
- Resistant to temperatures up to 150 °C
- Over 10 years of positive feedback worldwide
- Does not contaminate the moulded part
- Can be applied by spraying or by brush
- Does not cause build up on the moulds
- Reduces abrasion thus prolonging the durability of the mould

Target Customers

Production companies of **Concrete and Gypsum casted Objects**

COLTECH® E-series

COLTECH E495®

Prototyping Pore Sealer / Varnish

COLTECH E495®

COLTECH E495® is a single component, transparent, film-forming, polyurethane varnish used as a sealer / pore sealer on absorbent surfaces in prototyping applications. Cures by reaction with ground and air moisture.



Uses

COLTECH E495® is a highly specialized, prototyping sealer / varnish for use in preparation of porous, absorbent objects before the application of elastomeric resins in order to be copied (production of a negative prototype mold).

Advantages

- Film-Forming
- Easy Application (single component)
- Chemical resistance
- Mechanical resistance
- Excellent adhesion on absorbent surfaces
- Over 10 years of positive feedback worldwide

Target Customers

Production companies of **Concrete and Gypsum casted Objects**

COLTECH® Industrial Business Units



Adhesives for Industrial Assembly and Professional Use



Casting Resins for production of Resin-Casted, Decorative or Functional Objects



Elastomers for Elastic Molds or Elastic Casted Objects



Potting, Insulating Resins for use in the production of Electro / Electronic parts



Adhesives / Resins used for the Assembly of Filter Elements



Specialized Coatings for various Industrial Applications

